

Hampshire Water Transfer and Water Recycling Project Environmental Statement – Figure 18.4 Bus routes within the vicinity of the Order Limits

VOLUME NUMBER: 6

PLANNING INSPECTORATE SCHEME NUMBER: WA010002

APPLICATION DOCUMENT REFERENCE: 6.3

APFP REGULATION: 5(2)(a)

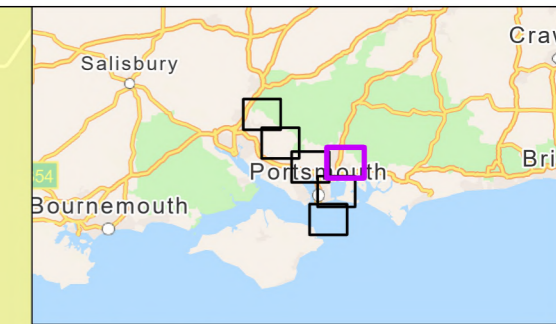
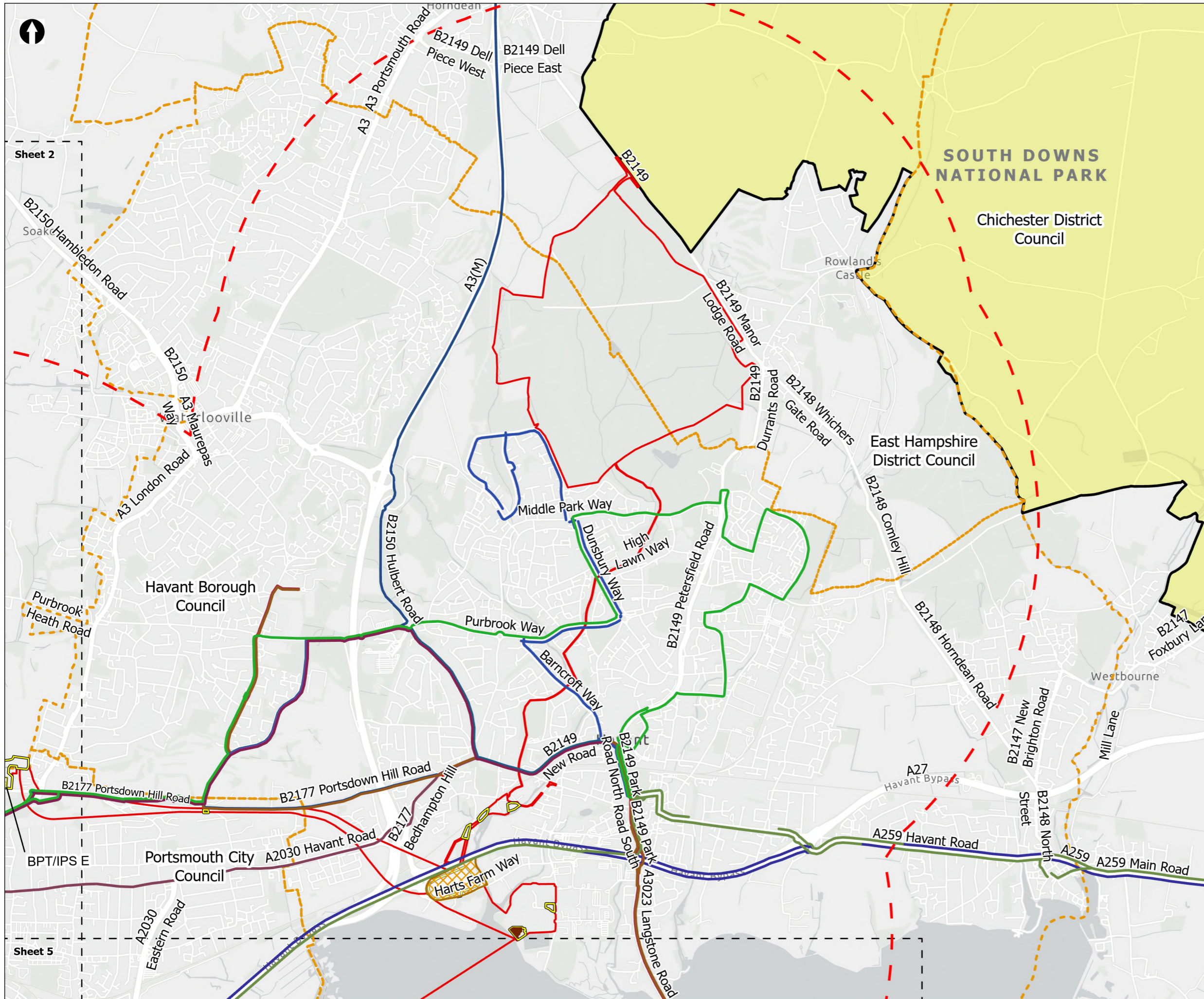
May 2026

Version 0



from
**Southern
Water** 

The Southern Water logo consists of the words 'Southern' and 'Water' stacked vertically in a dark blue, sans-serif font. To the right of the word 'Water' is a graphic element consisting of three stylized, wavy lines in shades of blue, representing water.



- Order Limits
 - Pipeline 3km Buffer
 - Sheet Extent Boxes 1:30K
 - National Parks
 - Local planning authorities
 - Construction compounds
 - Water Recycling Plant Site
 - Limits of Deviation for Budds Farm Pumping Station
- Bus Routes**
- 20
 - 22
 - 23
 - 30
 - 31
 - 700
 - 725
 - 737
 - SD4
 - SD5
 - SD7
- Above Ground Plant**
- Break Pressure Tank & Intermediate Pumping Station

Coordinate system: British National Grid; Datum: OSGB 1936
 Data sources: © Crown copyright and database rights 2026 Ordnance Survey 0100031673. Sources: Esri, TomTom, Garmin, FAO, NOAA, USGS, © OpenStreetMap contributors, and the GIS User Community

Copyright Department for Transport Copyright. Contains Department for Transport data Copyright Crown Copyright and database rights 2026.

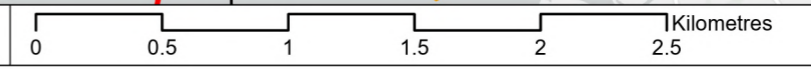
PROJECT TITLE
 Hampshire Water Transfer and Water Recycling Project

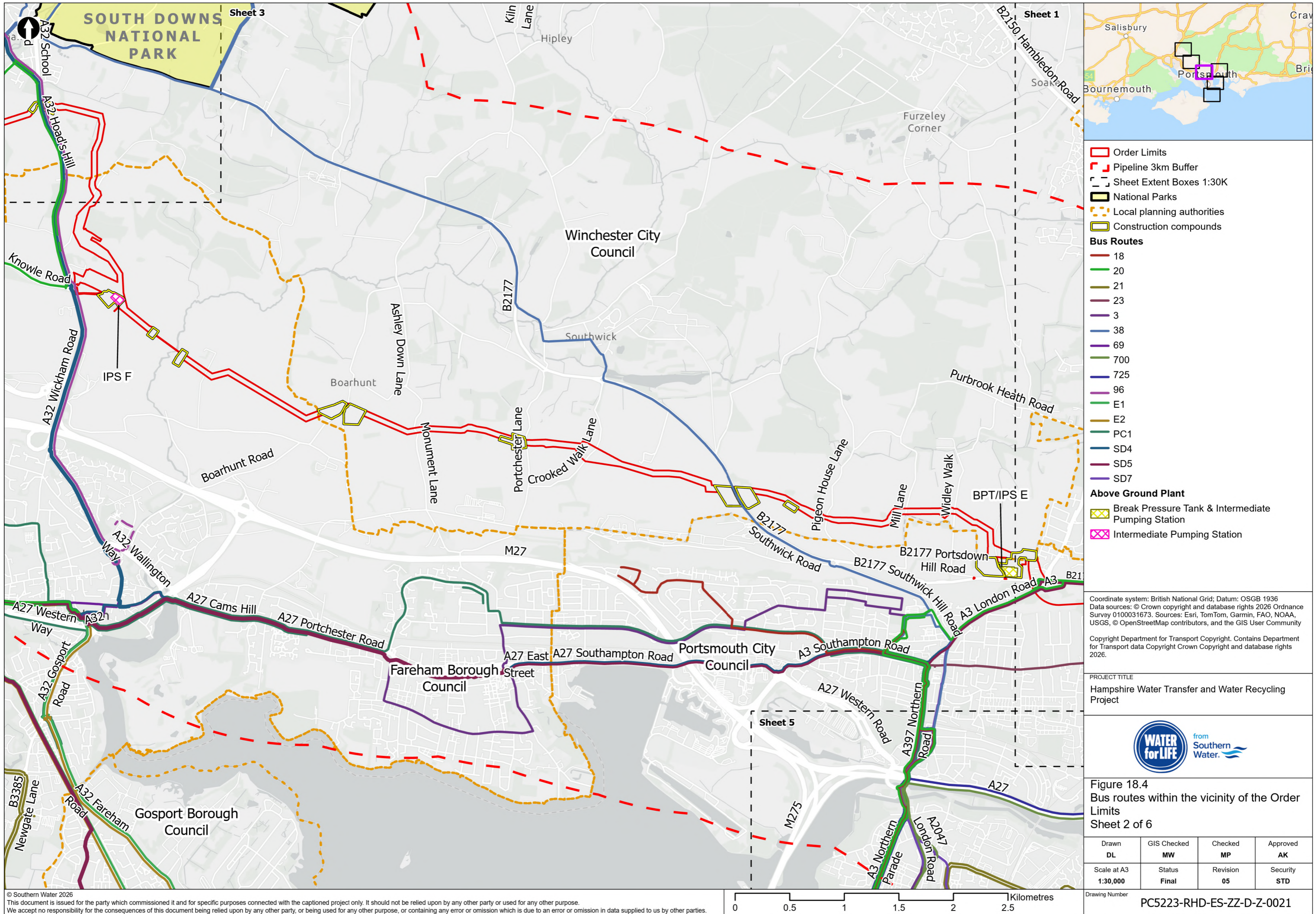


Figure 18.4
 Bus routes within the vicinity of the Order Limits
 Sheet 1 of 6

Drawn DL	GIS Checked MW	Checked MP	Approved AK
Scale at A3 1:30,000	Status Final	Revision 05	Security STD

Drawing Number
 PC5223-RHD-ES-ZZ-D-Z-0021





Order Limits

- Order Limits
- Pipeline 3km Buffer
- Sheet Extent Boxes 1:30K
- National Parks
- Local planning authorities
- Construction compounds

Bus Routes

- 18
- 20
- 21
- 23
- 3
- 38
- 69
- 700
- 725
- 96
- E1
- E2
- PC1
- SD4
- SD5
- SD7

Above Ground Plant

- Break Pressure Tank & Intermediate Pumping Station
- Intermediate Pumping Station

Coordinate system: British National Grid; Datum: OSGB 1936
 Data sources: © Crown copyright and database rights 2026 Ordnance Survey 0100031673. Sources: Esri, TomTom, Garmin, FAO, NOAA, USGS, © OpenStreetMap contributors, and the GIS User Community

Copyright Department for Transport Copyright. Contains Department for Transport data Copyright Crown Copyright and database rights 2026.

PROJECT TITLE
 Hampshire Water Transfer and Water Recycling Project

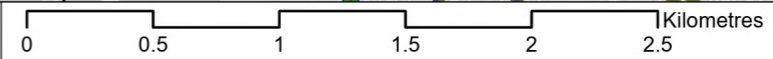


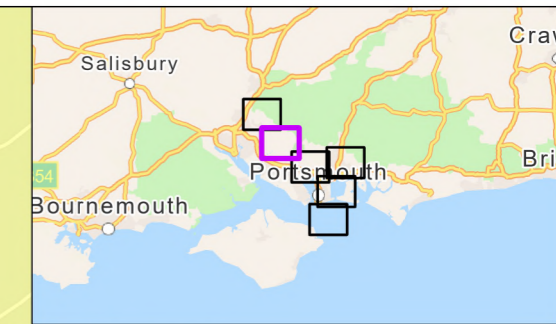
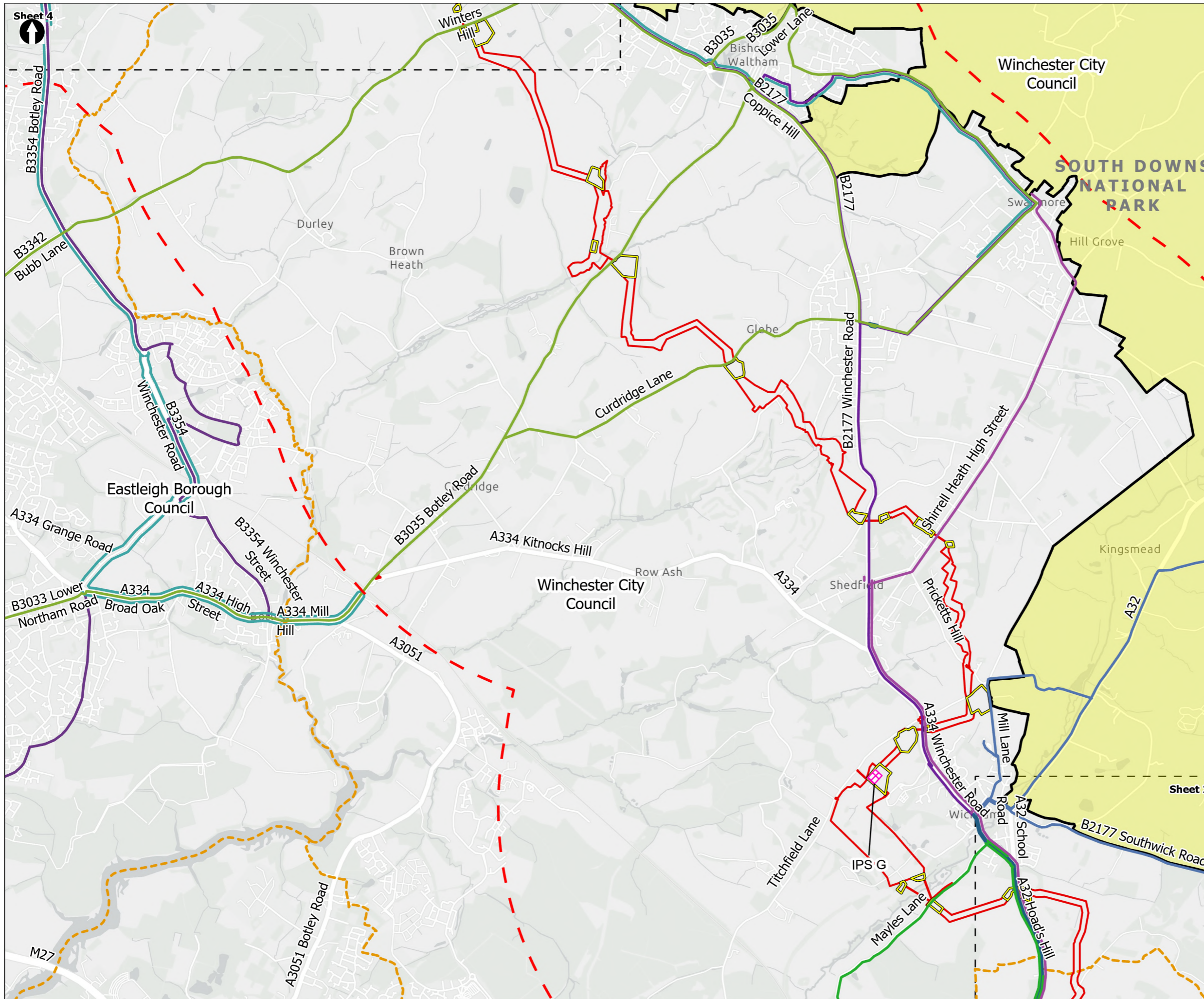
Figure 18.4
 Bus routes within the vicinity of the Order Limits
 Sheet 2 of 6

Drawn DL	GIS Checked MW	Checked MP	Approved AK
Scale at A3 1:30,000	Status Final	Revision 05	Security STD

Drawing Number
PC5223-RHD-ES-ZZ-D-Z-0021

© Southern Water 2026
 This document is issued for the party which commissioned it and for specific purposes connected with the captioned project only. It should not be relied upon by any other party or used for any other purpose. We accept no responsibility for the consequences of this document being relied upon by any other party, or being used for any other purpose, or containing any error or omission which is due to an error or omission in data supplied to us by other parties.





- Order Limits
 - Pipeline 3km Buffer
 - Sheet Extent Boxes 1:30K
 - National Parks
 - Local planning authorities
 - Construction compounds
- Bus Routes**
- 20
 - 3
 - 38
 - 49
 - 649
 - 69
 - 96
 - SD4
- Above Ground Plant**
- Intermediate Pumping Station

Coordinate system: British National Grid; Datum: OSGB 1936
 Data sources: © Crown copyright and database rights 2026 Ordnance Survey 0100031673. Sources: Esri, TomTom, Garmin, FAO, NOAA, USGS, © OpenStreetMap contributors, and the GIS User Community

Copyright Department for Transport Copyright. Contains Department for Transport data Copyright Crown Copyright and database rights 2026.

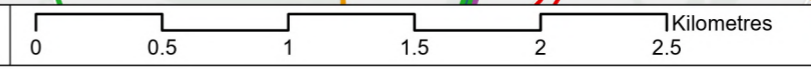
PROJECT TITLE
 Hampshire Water Transfer and Water Recycling Project

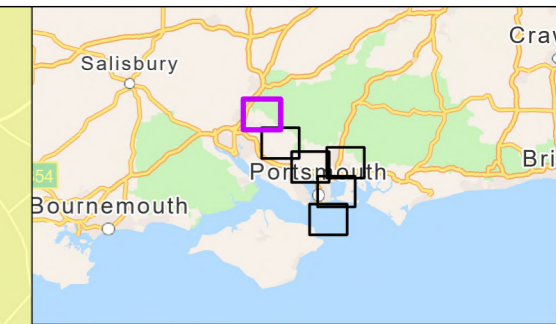
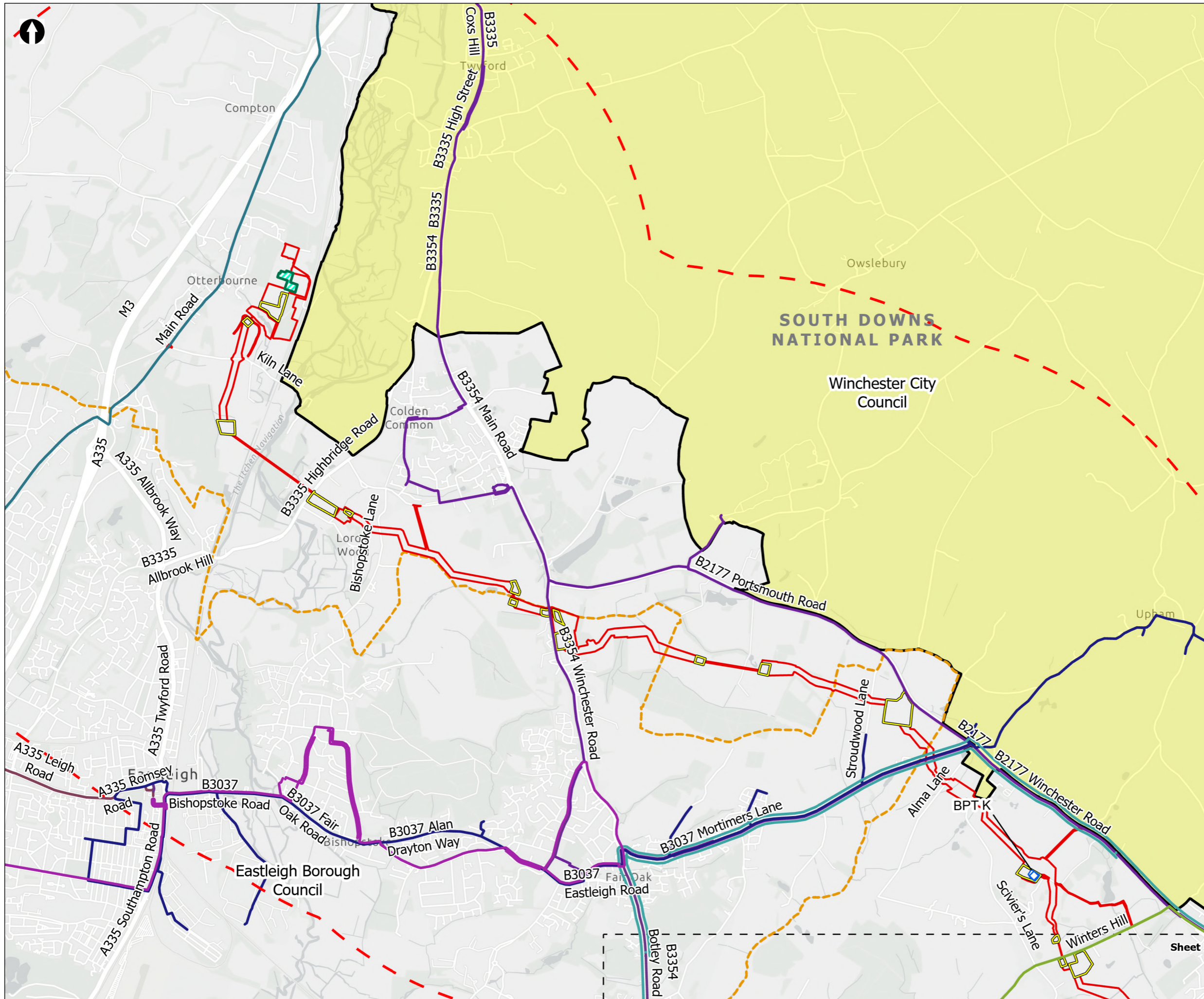


Figure 18.4
 Bus routes within the vicinity of the Order Limits
 Sheet 3 of 6

Drawn DL	GIS Checked MW	Checked MP	Approved AK
Scale at A3 1:30,000	Status Final	Revision 05	Security STD

Drawing Number
PC5223-RHD-ES-ZZ-D-Z-0021





▭ Order Limits
- - - Pipeline 3km Buffer
 Sheet Extent Boxes 1:30K
 National Parks
 Local planning authorities
 Construction compounds
 Limits of Deviation for Otterbourne INNS Treatment Plant

Bus Routes

- 1
- 2
- 23
- 24Y
- 3
- 49
- 649
- 69

Above Ground Plant

- Break Pressure Tank

Coordinate system: British National Grid; Datum: OSGB 1936
 Data sources: © Crown copyright and database rights 2026 Ordnance Survey 0100031673. Sources: Esri, TomTom, Garmin, FAO, NOAA, USGS, © OpenStreetMap contributors, and the GIS User Community

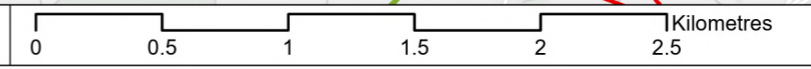
Copyright Department for Transport Copyright. Contains Department for Transport data Copyright Crown Copyright and database rights 2026.

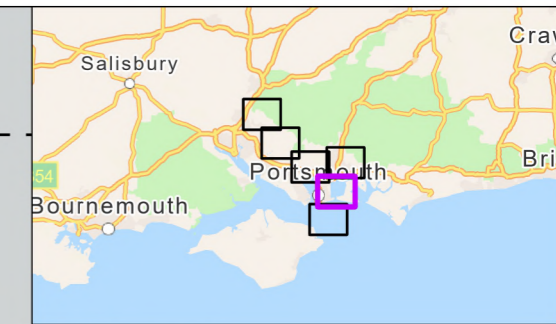
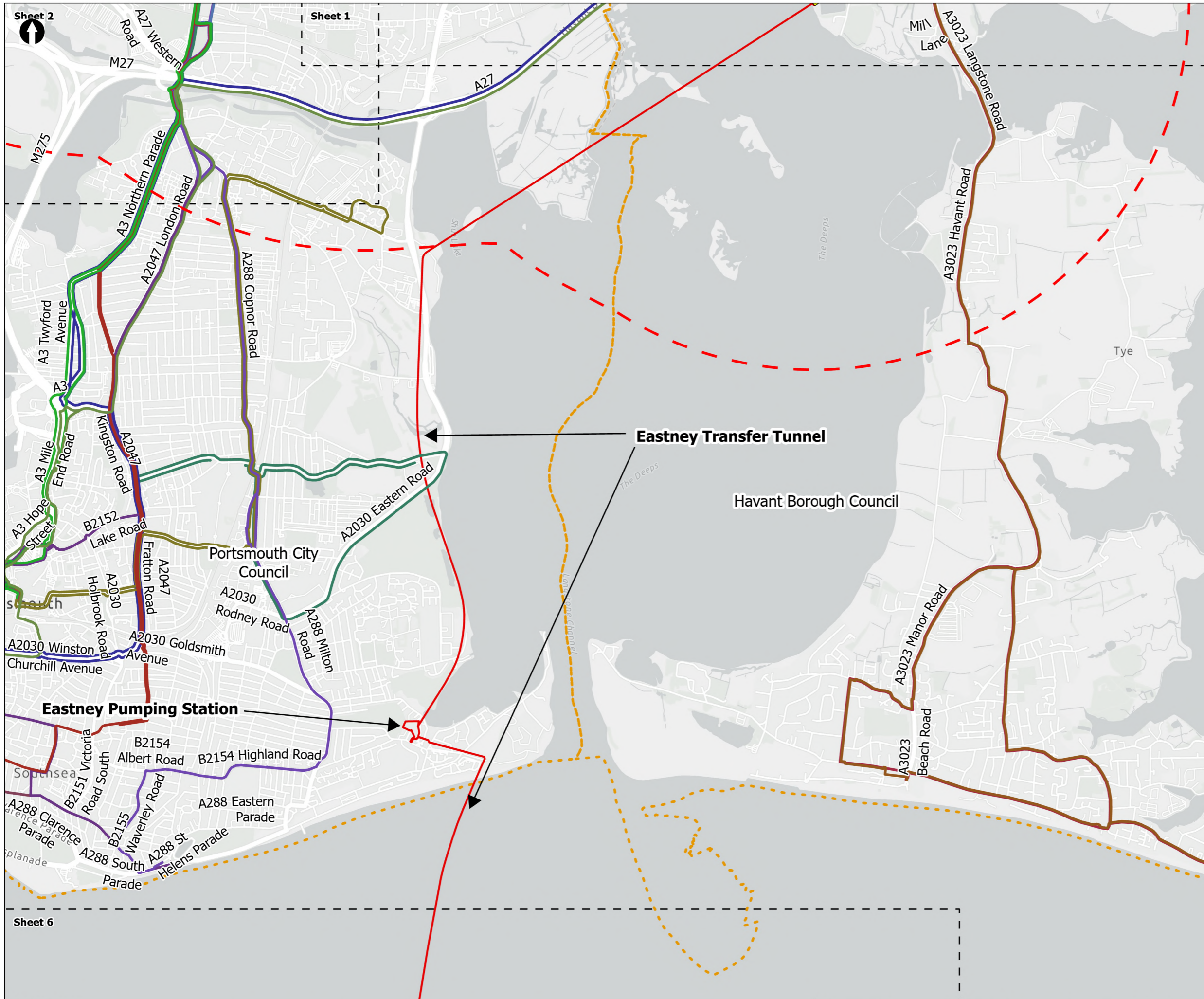
PROJECT TITLE
 Hampshire Water Transfer and Water Recycling Project



Figure 18.4
 Bus routes within the vicinity of the Order Limits
 Sheet 4 of 6

Drawn DL	GIS Checked MW	Checked MP	Approved AK
Scale at A3 1:30,000	Status Final	Revision 05	Security STD





- Order Limits
 - Pipeline 3km Buffer
 - Sheet Extent Boxes 1:30K
 - Local planning authorities
 - Construction compounds
 - Limits of Deviation for Budds Farm Pumping Station
- Bus Routes**
- 18
 - 20
 - 21
 - 23
 - 3
 - 30
 - 31
 - 38
 - 700
 - 725
 - PC1
 - SD7

Coordinate system: British National Grid; Datum: OSGB 1936
 Data sources: © Crown copyright and database rights 2026 Ordnance Survey 0100031673. Sources: Esri, TomTom, Garmin, FAO, NOAA, USGS, © OpenStreetMap contributors, and the GIS User Community

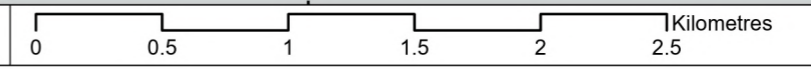
Copyright Department for Transport Copyright. Contains Department for Transport data Copyright Crown Copyright and database rights 2026.

PROJECT TITLE
 Hampshire Water Transfer and Water Recycling Project



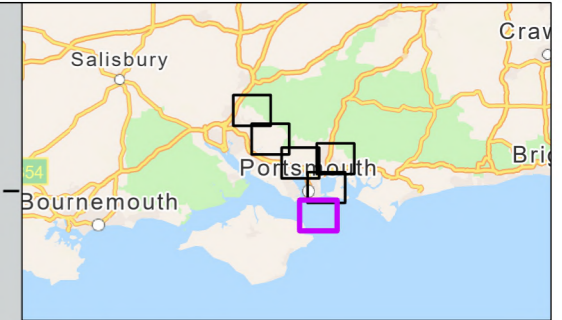
Figure 18.4
 Bus routes within the vicinity of the Order Limits
 Sheet 5 of 6




Drawn DL	GIS Checked MW	Checked MP	Approved AK
Scale at A3 1:30,000	Status Final	Revision 05	Security STD





Sheet 5



-  Order Limits
-  Sheet Extent Boxes 1:30K
-  Local planning authorities

Eastney Transfer Tunnel

Eastney Long Sea Outfall

ring Vale

B3340 Steyne Road

B3330 Nettlestone Hill

Nettlestone Hill

Isle of Wight Council

Coordinate system: British National Grid; Datum: OSGB 1936
 Data sources: © Crown copyright and database rights 2026 Ordnance Survey 0100031673. Sources: Esri, TomTom, Garmin, FAO, NOAA, USGS, © OpenStreetMap contributors, and the GIS User Community

Copyright Department for Transport Copyright. Contains Department for Transport data Copyright Crown Copyright and database rights 2026.

PROJECT TITLE
 Hampshire Water Transfer and Water Recycling Project



Figure 18.4
 Bus routes within the vicinity of the Order Limits
 Sheet 6 of 6

Drawn DL	GIS Checked MW	Checked MP	Approved AK
Scale at A3 1:30,000	Status Final	Revision 05	Security STD

